

Success Story

Mid-Yellowstone Rural Electric

mPower's software suite helps a small cooperative as it embarks on its GIS journey

— Project Summary —

The Goal

- Build a GIS while inspecting pole condition system wide
- Minimize overall cost by performing all project tasks while visiting field assets
- Deploy an Enterprise GIS that is more user-friendly and affordable compared to NISC AppSuite

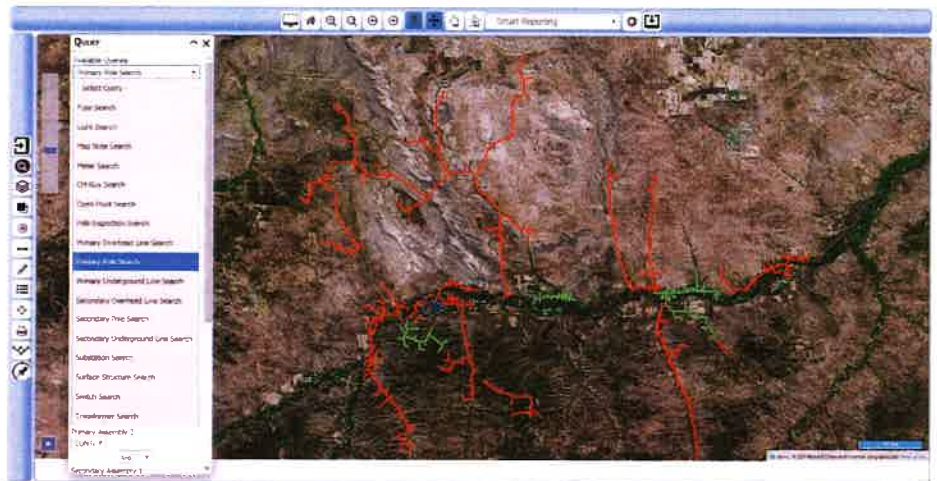
The Process

- Converted line-work and data in obsolete AutoCAD drawings into a "reference" database.
- Geo coded and linked additional service and location data from NISC CIS
- Gathered and incorporated data from other sources like Transformer database, state and county maps, and aeriels.
- Utilize Trimble Geo 7 and R1 collectors and receivers for collection and Genics Golden Retriever for pole inspection
- Build /verify connectivity model from source to load during collection

Products & Software

mPower Integrator - Web GIS & system integration software. (Data repository, viewing and reporting portal)

mPower Editor - Maintenance management and form building extension to edit, enter, and collect data in the field or office.



mPower was awarded and completed a full GPS inventory for Lower Yellowstone REC beginning in 2014 and finished at the end of 2016. Throughout the collection, mPower was providing an mPower-based GIS while delivering and preparing the data to NISC to support LYREC's deployment of NISC's full enterprise deployment at LYREC. After the successful NISC deployment, mPower was complemented on the quality of the data delivered by NISC. mPower was then added to NISC's recommended service provider list.

As LYREC was deploying, gaining experience and seeing mPower's software and experience firsthand, Jason Brothen became the Manager of Mid Yellowstone Electric Cooperative. Jason decided that mPower's personnel, products, expertise and pricing were ideally suited to support Mid Yellowstone's much smaller staff and budget as they embarked on their GIS journey.

"I knew firsthand that mPower's software and services would be a smart choice for Mid-Yellowstone Electric Cooperative."

- Jason Brothen, General Manager

